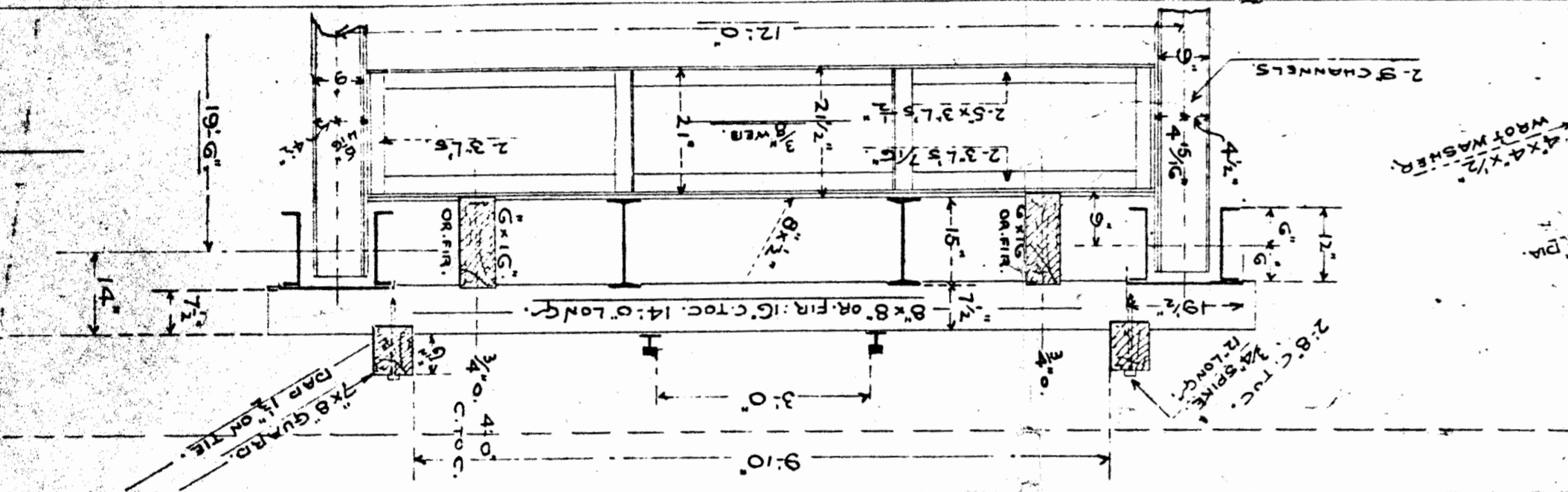
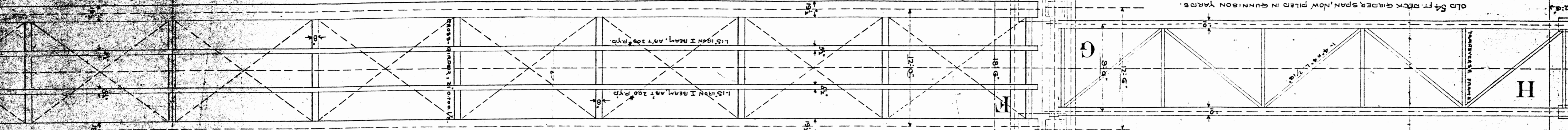


RECONSTRUCTION OF BRIDGE 329C, 3RD DIV.

SCALE 3/16" = ONE FOOT.

288-1116

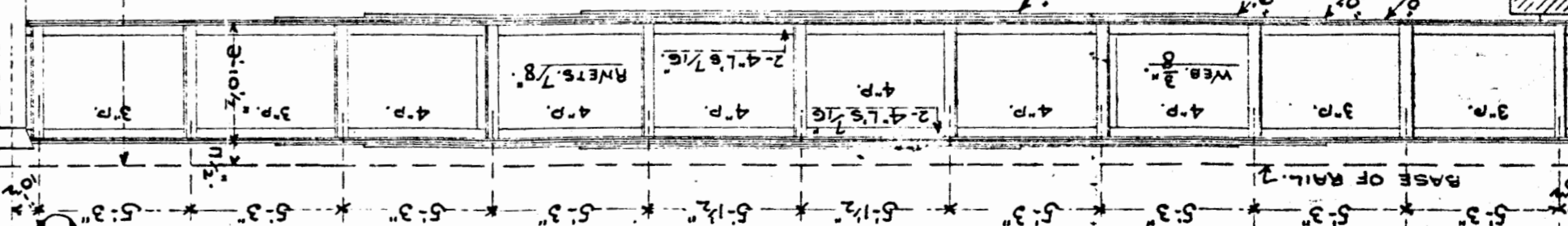
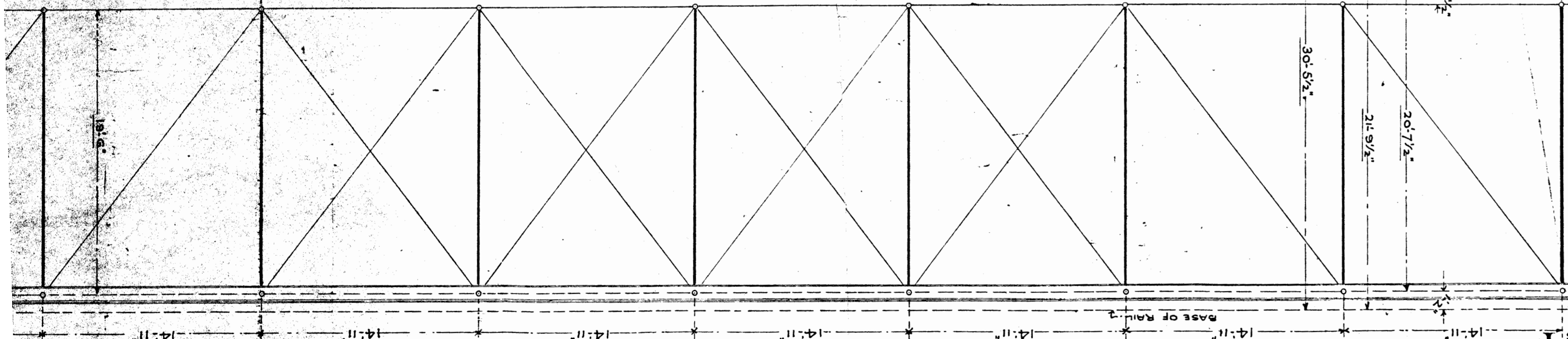
OLD 119 2/3 FT. DECK PIN CONNECTED SPAN NOW LYING PILED NEAR NATHROP STATION ON SECOND DIVISION.



J. C. BLAND
Consulting Engineer.

Bridge Association's Specifications.

NOTE THE 4 NEW WROUGHT IRON PIER PLATES 36" x 1/2" x 51" PLANNED ON TOP SURFACES WITH HOLES FOR PINS. USE HERE THE OLD SPAN NOW PILED NEAR NATHROP STATION, WITHOUT CHANGE.
TWO SPANS: FORMERLY BRIDGES NO. 231A AND 233A, SECOND DIVISION, DENVER & RIO GRANDE RAILROAD.
THE 119 2/3 FT. DECK PIN CONNECTED SPAN BUILT WHEN D.R.G.R. WAS UNDER MANAGEMENT OF A.T. & S.F. RAILROAD.



THIS 54 FT. DECK SPAN BUILT BY EDGE MOOR IRON WORKS IN JAN. 1880. FORMERLY BRIDGE NO. 73A, FIRST DIVISION, DENVER & RIO GRANDE RAILROAD. REMOVED IN 1888 AND SENT TO GUNNISON YARDS WHERE NOW LAYS. USED HERE WITHOUT CHANGE.

TOP FLANGE SECTION = 21'7 1/2" GROSS. = 17'8 1/2" NETT.
BOTTOM " " = 21'7 1/2" GROSS. = 17'8 1/2" NETT.

WEST.
No. 3

H

G

55'-4 3/16"

122'-0"

288-060

Sheet # 1