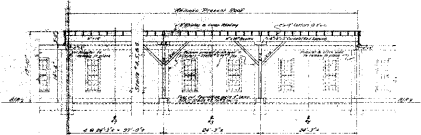


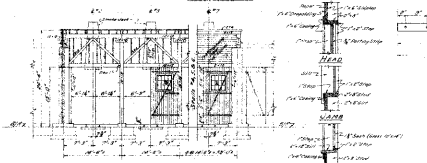
PARTIAL PLAN



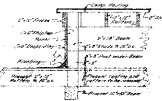
SECTION A-A



SECTION B-B

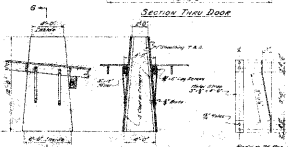


SECTION E-E



SECTION E-F

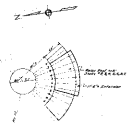
Roof Framing



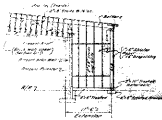
SECTION THRU DOOR

SECTION G-G

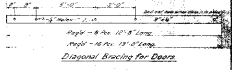
DETAIL OF SQUARE JACKS



LOCATION PLAN



SECTION C-C & D-D

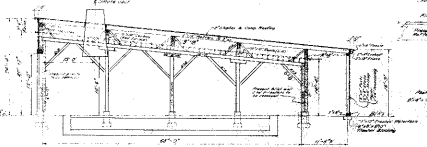


Diagonal Bracing for Doors



Hinge Straps & Strap Washers

Hinge Thumbs



LONGITUDINAL SECTION ALONG SEALS 2, 3, 4, 5, 6, & 7

D. & R. G. H. & Co.  
 DETAILS  
 RAISING ROOF AND EXTENDING  
 SIX STAIRS  
 GUNNING ENGINE HOUSE  
 CORNER 8th & 1st St. S. P. 100  
 Office of Chief Engr. Denver S. P. 100