

The Southern Lancaster County Historical Society

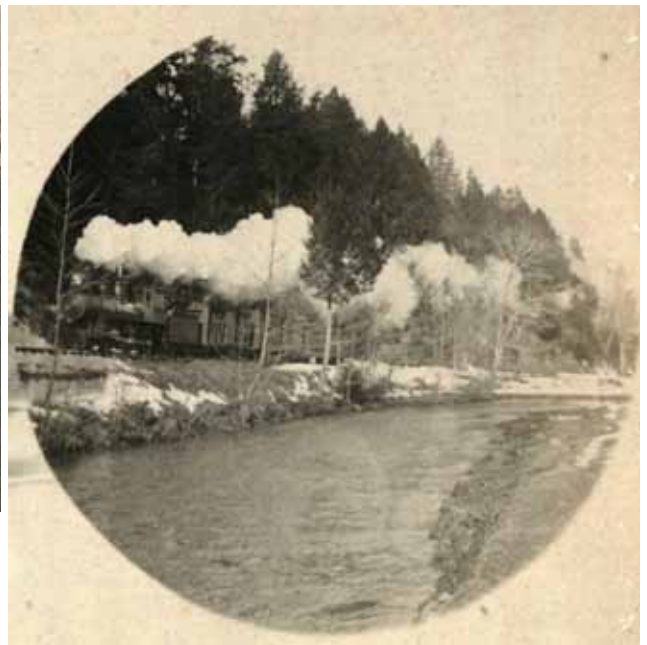
Presents

A Railroad for the Southern End

Local authors and historians Mike Roth and Stanley White present a new look at the "Little, Old & Slow," Pennsylvania's first Narrow Gauge railroad. Originally called the Peach Bottom Railway, it was later renamed the Lancaster, Oxford and Southern. The railroad carried produce to market, vacationers to southern Lancaster and shoppers to Oxford and Quarryville for forty years.



The presentation is packed with pictures and colorful stories of the little farmer's railroad, known for never being in a hurry and, occasionally, for blowing over in a big wind.



WHEN: Saturday, February 18, 2017, 1:30 p.m.

WHERE: Solanco Historical Society Founders Warehouse & Archive
1932 Robert Fulton Highway (Route 222)
Quarryville, PA 17566

Approximately 6.5 miles south of Quarryville, directly across from the Robert Fulton Birthplace Museum & Garden, in the brick warehouse.

The program is free and open to the public. We look forward to seeing you there.