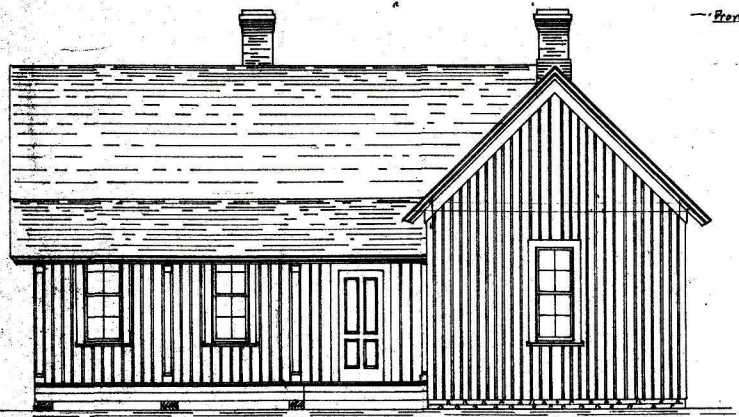
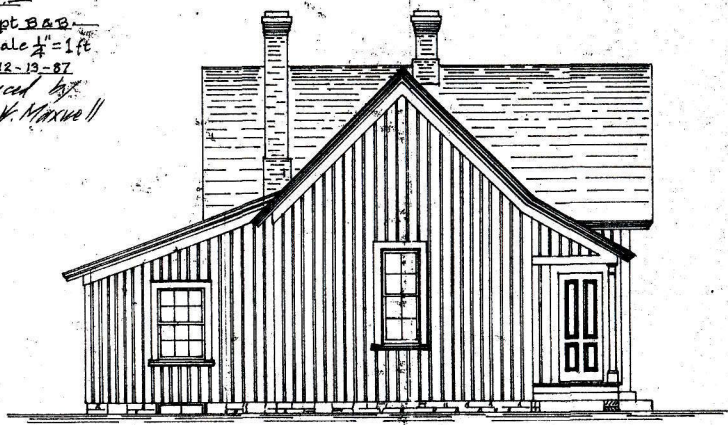


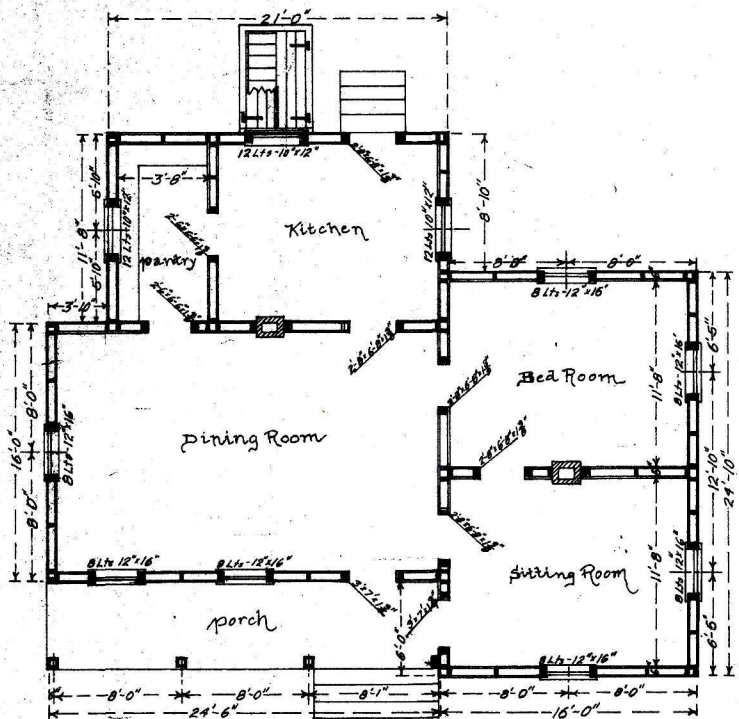
General Plan
of Station House
D. & G. R.R.
From Office Supt. B. & B.
Scale 1/4" = 1 ft.
12-13-87
Revised by
John V. Maxwell II



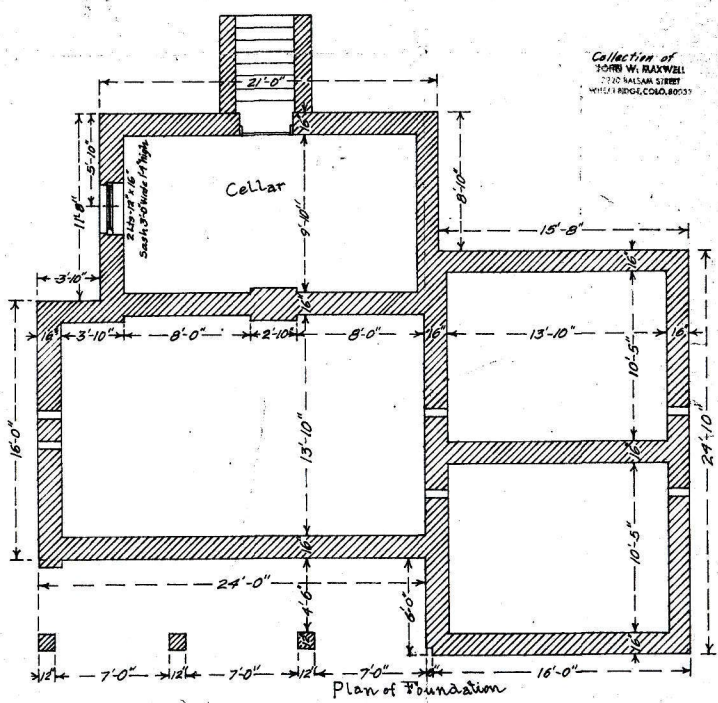
Front Elevation



Side Elevation



Floorplan



Plan of Foundation

Collection of
JOHN V. MAXWELL
730 BALSAM STREET
WHEELING, W. VA. 26061